

Product Description

InsulWall® is a lightweight and structural insulated panel made from EPS-FR that is lined with a unique BlueScope® primed steel ready for third party coating systems such as a Dulux® Wash & Wear painted interiors and Dulux® Acratex® acrylic-render coated exteriors. InsulWall® is purpose designed to suit commercial applications as well as the residential housing, modular and renovation market. InsulWall® is available in thicknesses to suit 90mm interior walls and 140mm exterior walls and is available for use with the NCC CodeMark accredited InsulLiving® building system.

Panel Properties		
Panel Thickness (mm)	90	140
Mass (kg/m ²)	11.8	12.5
SL Grade Total R-value (m ² K/W)	2.4	3.7

Note: The above Total R-values are for insulation average temperature of 15°C. Contact us for other temperatures and different EPS-FR core grades.

Span Table

NON-CYCLONIC REGION A&B (WALL APPLICATIONS ONLY)

SL Grade EPS-FR Core / 0.6mm Steel Skins.

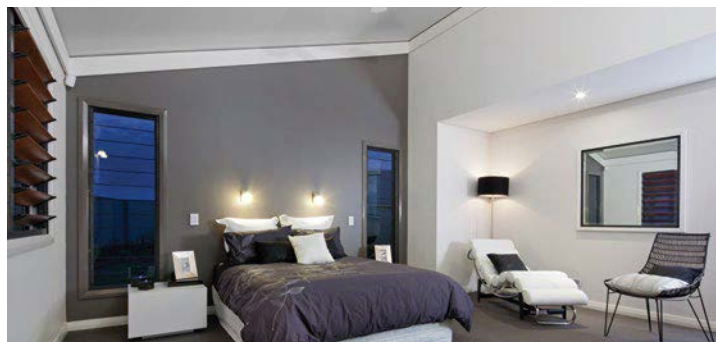
Maximum wall height / span (mm):	
Wind Class	Span (mm)
N2	5400
N3	4200
N4	3600

Span Table

CYCLONIC REGION A&B (WALL APPLICATIONS ONLY)

SL Grade EPS-FR Core / 0.6mm Steel Skins.

Maximum wall height / span (mm):	
Wind Class	Span (mm)
C1	3600
C2	3000

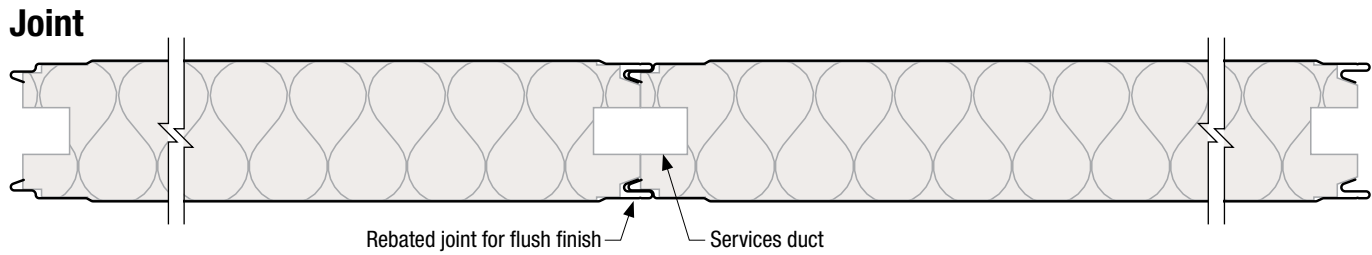


Core	EPS-FR (Expanded Polystyrene with fire retardant)
Width (cover mm)	1200
Thickness (mm)	90, 140
Length	Up to 16m (check for availability)
External Material	0.6mm G300 prime coated BlueScope® steel
External Finishes	Plain
Exterior Colour Options	External coating should strictly follow Dulux® DuSpec Specification. Dulux® Acratex® Coventry Coarse.
Internal Material	0.6mm G300 prime coated BlueScope® steel
Internal Finishes	Plain
Interior Colour Options	Internal coating should strictly follow Dulux® DuSpec Specification. Broad walls - Dulux® Wash & Wear 101 Adv L/G. Kitchens - Dulux® Wash & Wear Kitchen. Bathrooms - Dulux® Wash & Wear Bathroom L/G for wet areas
Paint System	AS/NZS 2728 & AS 1397
Acoustic Properties	Rw 24 - 25 depending on thickness
Bushfire Attack Level	BAL-40 (All exposed core to be covered with flashing)
Fire Hazard Properties	AS/NZS 1530.3
Ignitability Index	0
Spread of Flame Index	0
Heat Evolved Index	0
Smoke Index	2-3
SMOGR _{RC}	< 100

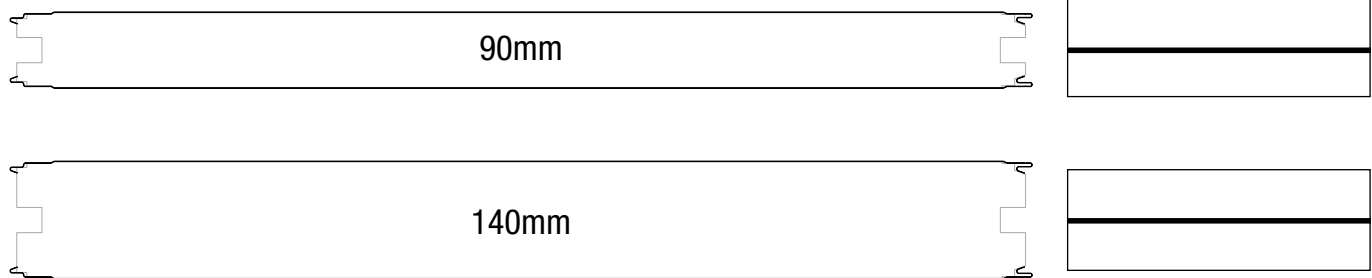
The technical information contained in this document cover a breadth of applications where InsulWall® may be used, which may be outside the scope of our Codemark certificate. Data specific to CodeMark certification can be found on InsulWall®'s CoC CM40033.

SPAN TABLE NOTES:

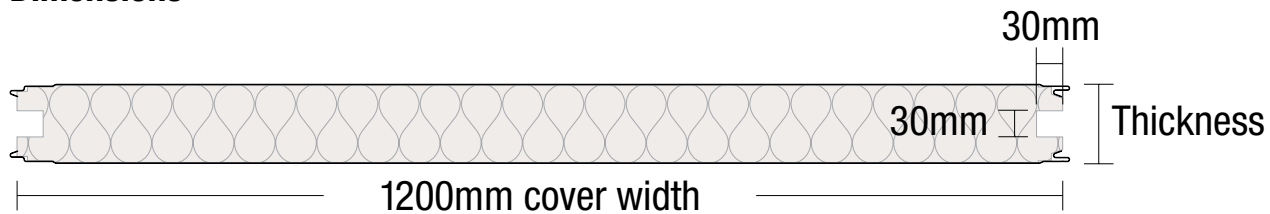
1. Wind speeds and coefficients based on AS 4055 - Wind Loads for Housing.
2. Serviceability deflection limit of span/150 has been allowed for.
3. Further information is available in the Technical Manual including: bracing capacity, axial load, support of cupboards and bracket loading.



Profiles



Dimensions



Bondor® National Network

BRISBANE / EXPORT
103 Ingram Road
Acacia Ridge QLD 4110
T: 07 3323 8500
F: 07 3323 8501

MELBOURNE
329A St Albans Road
Sunshine VIC 3020
T: 03 8326 8000
F: 03 8326 8099

SYDNEY
49 – 53 Newton Road
Wetherill Park NSW 2164
T: 02 9609 0888
F: 02 9729 1114

PERTH
17 Gauge Circuit
Canning Vale WA 6155
T: 08 9256 0600
F: 08 9256 0620

ADELAIDE
70 – 72 Rundle Road
Salisbury South SA 5106
T: 08 8282 5000
F: 08 8282 5099

LAUNCESTON
7 Connector Park Drive
Kings Meadows TAS 7249
T: 03 6335 8500
F: 03 6335 8544

To connect to your nearest Bondor® branch simply call 1300 300 099 or visit www.bondor.com.au