

Product Description

BondorPanel[®] is a versatile and high performing insulated wall and ceiling panel used in controlled environments such as cold storage, food preparation areas and clean rooms, but extends its use to transportable offices, wall partitions and many other applications.

| Panel Properties | | | | | | | |
|--|-------|-------|-------|-------|-------|-------|-------|
| Panel Thickness (mm) | 50 | 75 | 100 | 125 | 150 | 200 | 250 |
| Typical Mass (kg/m ²) | 11.3 | 11.6 | 12.0 | 12.3 | 12.7 | 13.3 | 14.0 |
| SL Grade Declared λ (W/m.K) at 23°C | 0.042 | 0.042 | 0.042 | 0.042 | 0.042 | 0.042 | 0.042 |
| SL Grade Declared R-value (m ² K/W) at 23°C | 1.20 | 1.80 | 2.40 | 3.00 | 3.60 | 4.85 | 6.05 |
| SL Grade Total R-value (m ² K/W) at 6°C | 1.45 | 2.10 | 2.74 | 3.38 | 4.03 | 5.31 | 6.60 |
| SL Grade Total R-value (m ² K/W) at 15°C (Winter) | 1.41 | 2.04 | 2.66 | 3.28 | 3.91 | 5.16 | 6.41 |
| SL Grade Total R-value (m ² K/W) at 30°C (Summer) | 1.34 | 1.94 | 2.53 | 3.13 | 3.72 | 4.91 | 6.09 |

Note: The Declared R-value is at 23°C in accordance with AS/NZS 4859.1:2018 & AS/NZS 4859.2:2018.

Span Table

NON-CYCLONIC REGION A&B (WALL APPLICATIONS ONLY)

SL Grade EPS-FR Core / 0.6mm Steel Skins.

Maximum uniformly distributed ultimate wind load (kPa) for the given span:

| Single Span, wind pressure acting outwards | | | | | | | |
|--|----------------------|------|------|------|-------|-------|-------|
| Span (mm) | Panel Thickness (mm) | | | | | | |
| | 50 | 75 | 100 | 125 | 150 | 200 | 250 |
| 1500 | 3.39 | 5.09 | 6.79 | 8.48 | 10.18 | 13.58 | 16.97 |
| 2700 | 1.86 | 2.83 | 3.77 | 4.71 | 5.66 | 7.54 | 9.43 |
| 3900 | 0.95 | 1.57 | 2.09 | 2.62 | 3.14 | 4.19 | 5.24 |
| 5100 | 0.54 | 0.92 | 1.22 | 1.53 | 1.84 | 2.45 | 3.06 |
| 6300 | 0.33 | 0.60 | 0.80 | 1.00 | 1.20 | 1.60 | 2.01 |
| 7500 | - | 0.42 | 0.57 | 0.71 | 0.85 | 1.13 | 1.42 |
| 8700 | - | 0.30 | 0.42 | 0.53 | 0.63 | 0.84 | 1.05 |

| Multi Span, wind pressure acting outwards | | | | | | | |
|---|----------------------|------|------|------|------|------|------|
| Span (mm) | Panel Thickness (mm) | | | | | | |
| | 50 | 75 | 100 | 125 | 150 | 200 | 250 |
| 1500 | 2.72 | 4.07 | 5.43 | 6.79 | 8.15 | 9.92 | 9.92 |
| 2700 | 1.51 | 2.26 | 3.02 | 3.77 | 4.53 | 5.51 | 5.51 |
| 3900 | 1.04 | 1.57 | 2.09 | 2.61 | 3.13 | 3.82 | 3.82 |
| 5100 | 0.61 | 0.92 | 1.22 | 1.53 | 1.84 | 2.45 | 2.92 |
| 6300 | 0.40 | 0.60 | 0.80 | 1.00 | 1.20 | 1.60 | 2.01 |
| 7500 | 0.28 | 0.42 | 0.57 | 0.71 | 0.85 | 1.13 | 1.42 |
| 8700 | - | 0.32 | 0.42 | 0.53 | 0.63 | 0.84 | 1.05 |

*Refer notes 1-4.

Span Table Internal Cold Storage

SL Grade EPS-FR Core / 0.6mm Steel Skins. Maximum span (mm):

| Single Span, internal cold storage 0°C or more | | | | | | | |
|--|----------------------|------|------|------|------|-------|-------|
| Span (mm) | Panel Thickness (mm) | | | | | | |
| | 50 | 75 | 100 | 125 | 150 | 200 | 250 |
| Walls (Non-Load Bearing) | - | 5700 | 7100 | 8300 | 9300 | 10800 | 12000 |
| Walls (Load Bearing) | - | 5100 | 6500 | 7500 | 8200 | 9500 | 10700 |
| Ceilings | - | 5100 | 6300 | 7200 | 7800 | 9000 | 9900 |

| Multi-span, internal cold storage 0°C or more | | | | | | | |
|---|----------------------|------|------|------|------|-------|-------|
| Span (mm) | Panel Thickness (mm) | | | | | | |
| | 50 | 75 | 100 | 125 | 150 | 200 | 250 |
| Walls (Non-Load Bearing) | - | 6500 | 7500 | 8900 | 9100 | 10500 | 11700 |
| Walls (Load Bearing) | - | 6000 | 6900 | 7700 | 8400 | 9700 | 10900 |
| Ceilings | - | 5300 | 6000 | 6900 | 7500 | 8600 | 9600 |

*Refer notes 3-10.



| | |
|-------------------------|---|
| Core | EPS-FR (Expanded Polystyrene with fire retardant) |
| Width (cover mm) | 1200 |
| Thickness (mm) | 50, 75, 100, 125, 150, 200, 250 |
| Length | Up to 16m (check for availability) |
| External Material | BlueScope COLORBOND [®] Steel 0.6mm G300 CRP Grade |
| External Finishes | Plain, Ribbed, Satinline |
| Exterior Colour Options | COLORBOND [®] Intramax [™] or other standard & non-standard colours |
| Internal Material | BlueScope COLORBOND [®] Steel 0.6mm G300 CRP Grade |
| Internal Finishes | Plain |
| Interior Colour Options | COLORBOND [®] Intramax [™] |
| Paint System | AS/NZS 2728 & AS 1397 |
| Acoustic Properties | Rw 24 - 25 depending on thickness |
| Material Group Numbers | C1.10 Group 1 & 2 ^a |
| Bushfire Attack Level | BAL-40 (All exposed core to be covered with flashing) |
| Fire Hazard Properties | AS/NZS 1530.3 |
| Ignitability Index | 0 |
| Spread of Flame Index | 0 |
| Heat Evolved Index | 0 |
| Smoke Index | 2-3 |
| SMOGR _{RC} | < 100 |

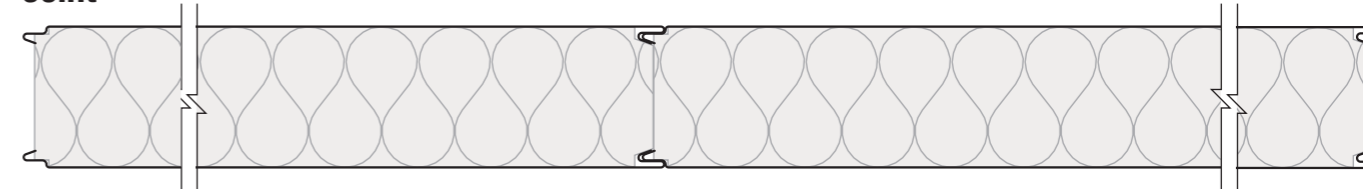
a. AS 5637.1 / AS ISO 9705 - BCA Group Number (Spec C1.10)
BondorPanel[®] EPS-FR steel skinned insulated building panels conform to the requirements of the BCA Specification C1.10 as either Group 2 or Group 1 depending on the thickness and construction detail.
Group 1
Panel up to 250mm thick with steel 'wall-wall' and 'wall-ceiling' angles fixed with steel rivets or screws at maximum 300mm centres is classified as Group 1.
Group 2
Panel up to 150mm thick with aluminium 'wall-wall' and 'wall-ceiling' angles fixed with aluminium rivets or screws at 300mm centres is classified as Group 2. Panel thicker than 150mm requires steel 'wall-wall' and 'wall-ceiling' angles fixed with steel rivets or screws at 300mm centres to be classified as Group 2.

The technical information contained in this document cover a breadth of applications where BondorPanel[®] may be used, which may be outside the scope of our Codemark certificate. Data specific to CodeMark certification can be found on BondorPanel's CoC CM40189.

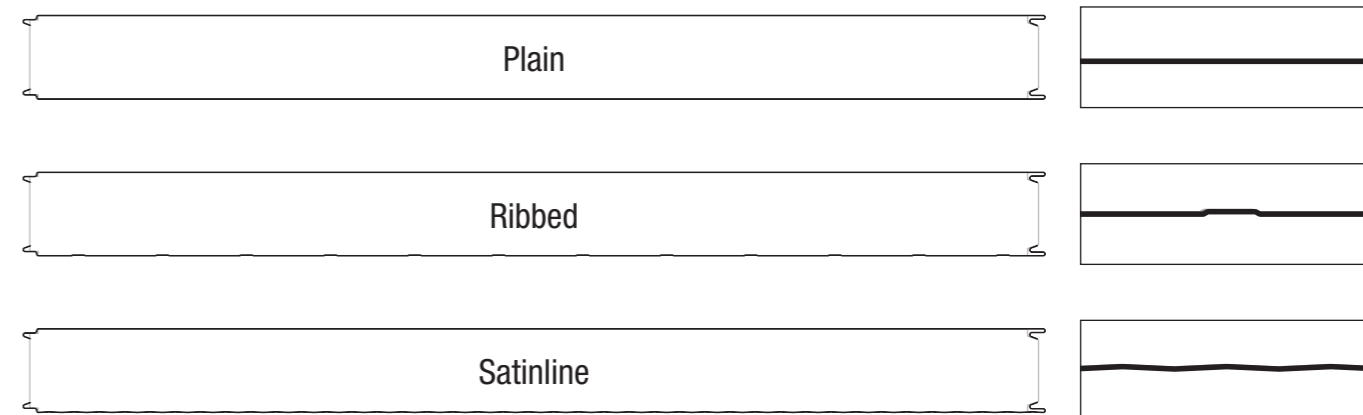
SPAN TABLE NOTES:

- Extended span tables including cyclonic regions C&D and 300mm thick panel are also available. Refer Bondor[®].
- Fixing with min. 14g tek screws (x4 off) or mushroom head bolts (x2 off) per fixing point are required.
- Pressures specified are for wind gusts only per AS/NZS 1170.2.
- Deflection limit of span/150 applies, and in accordance with Serviceability Limit State criteria per AS/NZS 1170.0 - TABLE C1.
- This span table applies for cold storage constructed wholly within a larger enclosed building. Pressure relief port is to be provided for a freezer in accordance with Bondor[®] recommendation.
- Panel thicknesses of not less than 100mm are recommended for chillers, not less than 150mm for freezers and not less than 200mm for blast freezers, depending on structural considerations. Check 'R' value for insulation requirements.
- Fixing with mushroom head bolts (x1 off) minimum per panel per line of support is required.
- Self weight of the panel has been allowed for, plus an allowance of up to 10kg/m² for light duty fittings (lights, etc.). No other dead loads permitted.
- Non-trafficable maintenance access (concentrated load) of 140kg on any span has been allowed for.
- Distributed live load of 0.25kPa (as per AS/NZS 1170.1) has been allowed for. Bondor[®] tests comply with details outlined in AS 4040.0, AS 4040.1, AS 4040.2, AS 4040.3, AS 1562.1 and AS/NZS 1170.1.

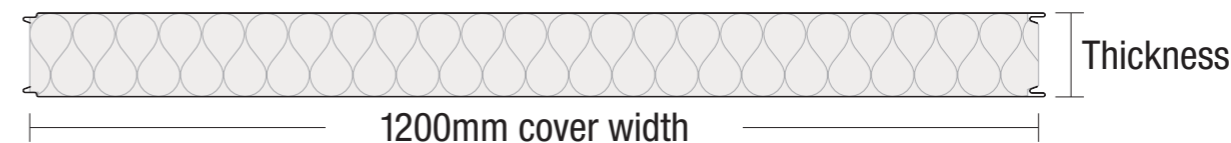
Joint



Profiles



Dimensions



Bondor[®] National Network

BRISBANE / EXPORT
103 Ingram Road
Acacia Ridge QLD 4110
T: 07 3323 8500
F: 07 3323 8501

PERTH
17 Gauge Circuit
Canning Vale WA 6155
T: 08 9256 0600
F: 08 9256 0620

MELBOURNE
6 Dunmore Drive
Truganina VIC 3029
T: 03 8326 8000
F: 03 8326 8099

ADELAIDE
70 - 72 Rundle Road
Salisbury South SA 5106
T: 08 8282 5000
F: 08 8282 5099

SYDNEY
49 - 53 Newton Road
Wetherill Park NSW 2164
T: 02 9609 0888
F: 02 9729 1114

LAUNCESTON
7 Connector Park Drive
Kings Meadows TAS 7249
T: 03 6335 8500
F: 03 6335 8544

To connect to your nearest Bondor[®] branch simply call 1300 300 099 or visit www.bondor.com.au

Metecno Pty Limited. ABN 44 096 402 934. The manufacturer reserves the right to change the specification without notice. Bondor[®], Equitilt[®], BondorPanel[®], FlameGuard[®], FlameGuard[®] Plus, MetecnoPanel[®], MetecnoInspire[®], EconoClad[®], MetecnoKasset[®], MetecnoTherm[®], InsuWall[®], LuxeWall[®], DesignerWall[®], SolarSpan[®], InsulRoof[®], MetecnoSpan[®], CoolRoof[®], Equideck[®], InsulLiving[®], Metecno[®] are trademarks of Metecno Pty Limited. BlueScope, COLORBOND[®], Intramax[™] and colour names are trademarks of BlueScope Steel Limited. The colours shown in this publication have been reproduced to represent actual product colours as accurately as possible. However, given printing limitations, we recommend checking your chosen colour against an actual sample before placing orders. This advice is of a general nature only. Designers must provide for adequate structural performance and other Building Code requirements. *Conditions may apply. **Limited availability, minimum order quantity may be required. ^Check with NCC for permissible Solar Absorptance before selecting the exterior roof colour. Darker colours may be warranted for use in limited regions refer to www.bondor.com.au as this information is subject to change. Consult Bondor[®] for your application. BON0126 Tech Data Sheets - BondorPanel v50 05/07/2021



Leaders in Thermal & Architectural Building Solutions